

Entertainment Center, Corner Unit for large room:

Color Code:

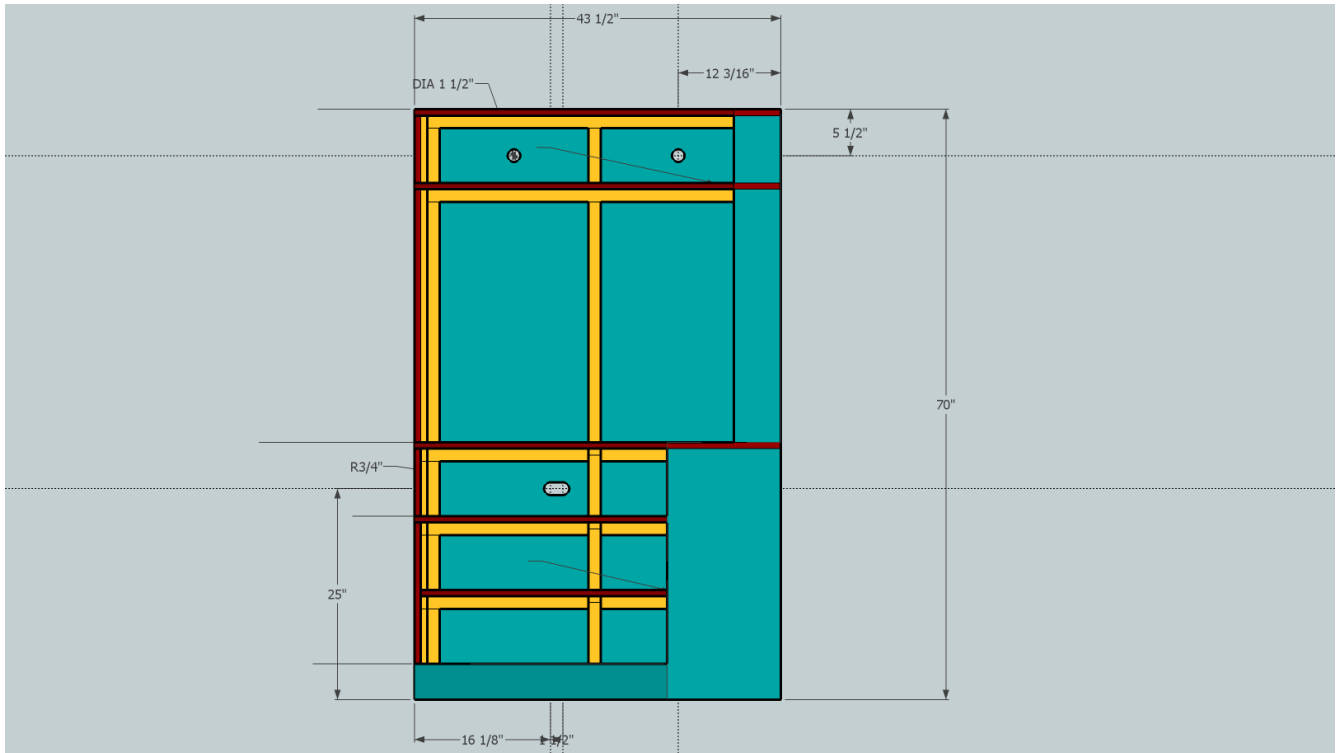
Cyan- board faces

Red- Board edges

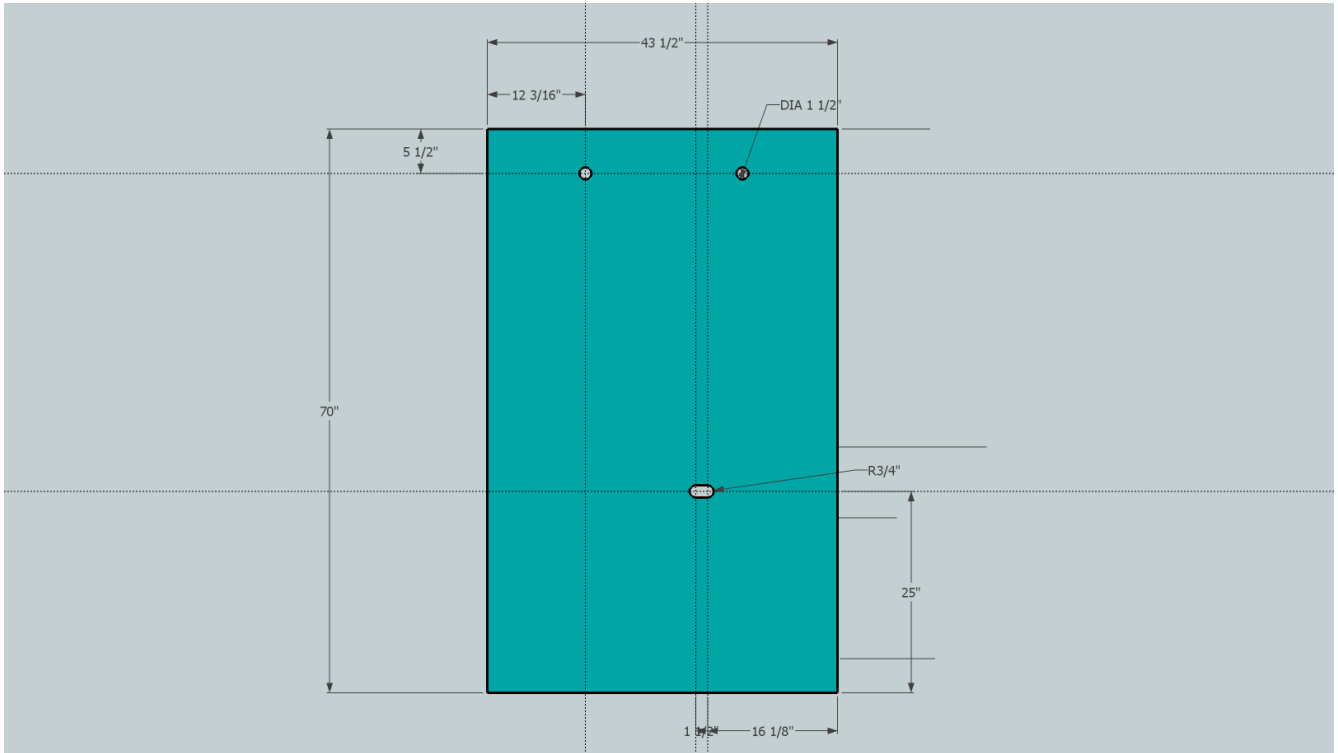
Yellow- support structure, made from 1x2s

First, some different views, starting with some 2D views:

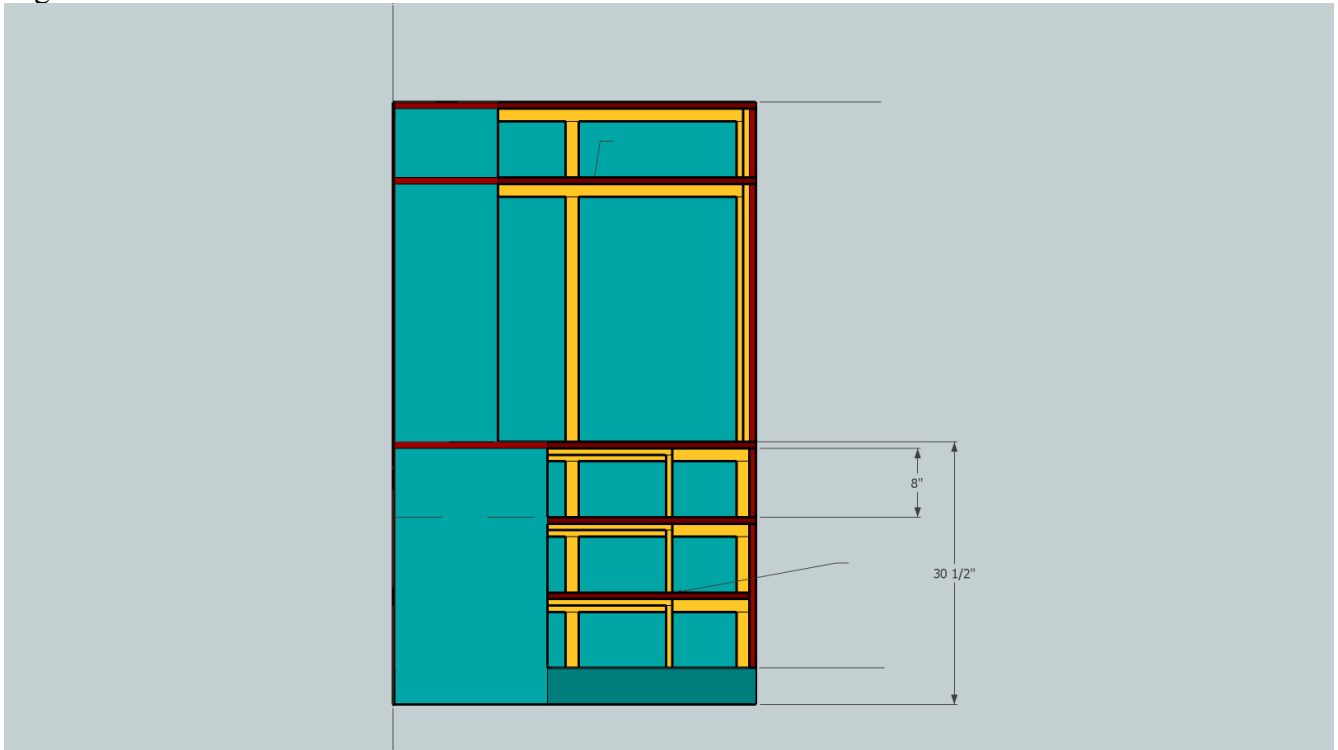
Front:



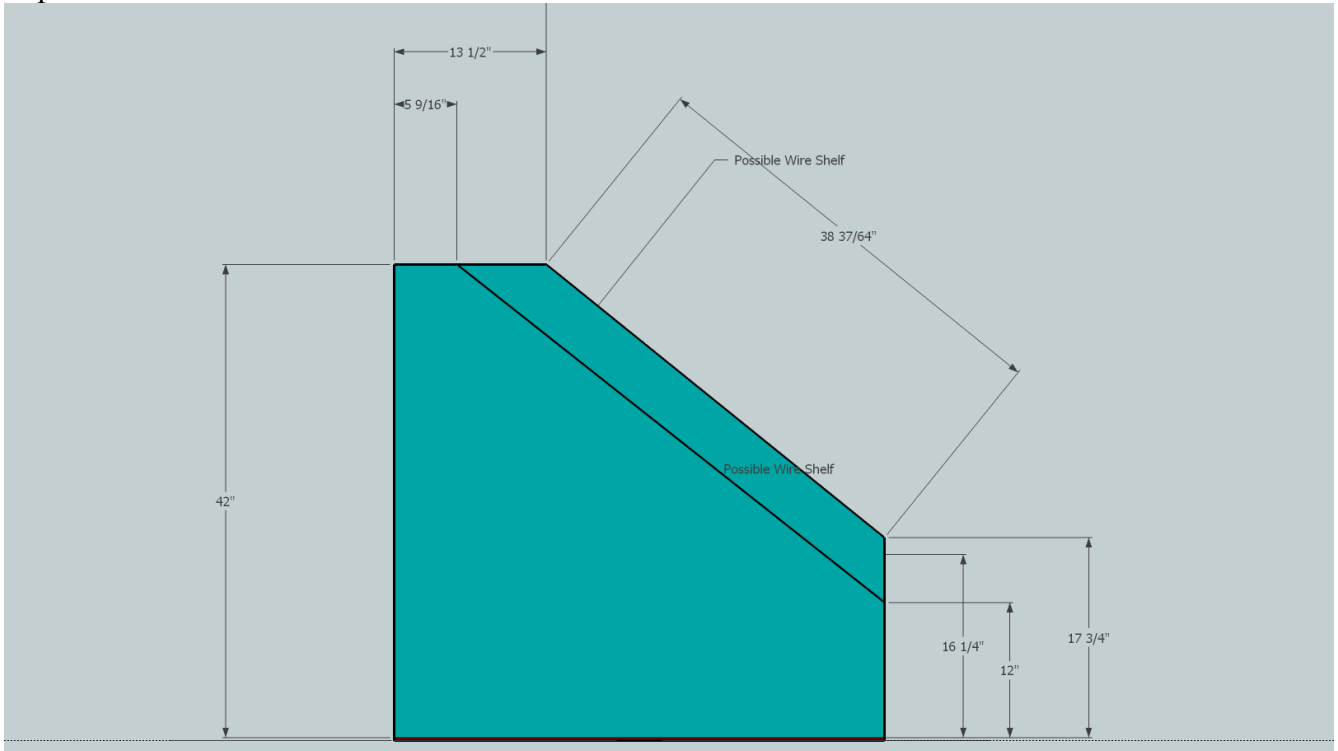
Rear:



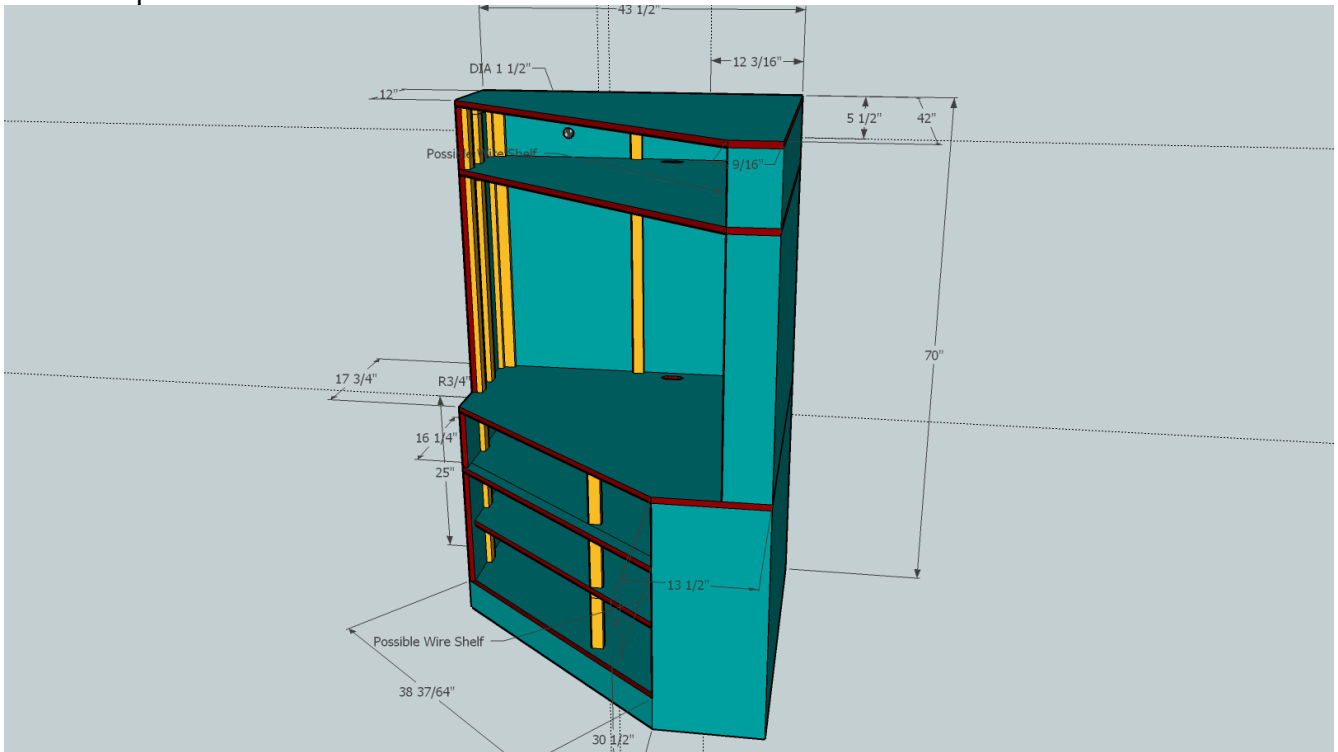
Right Side:



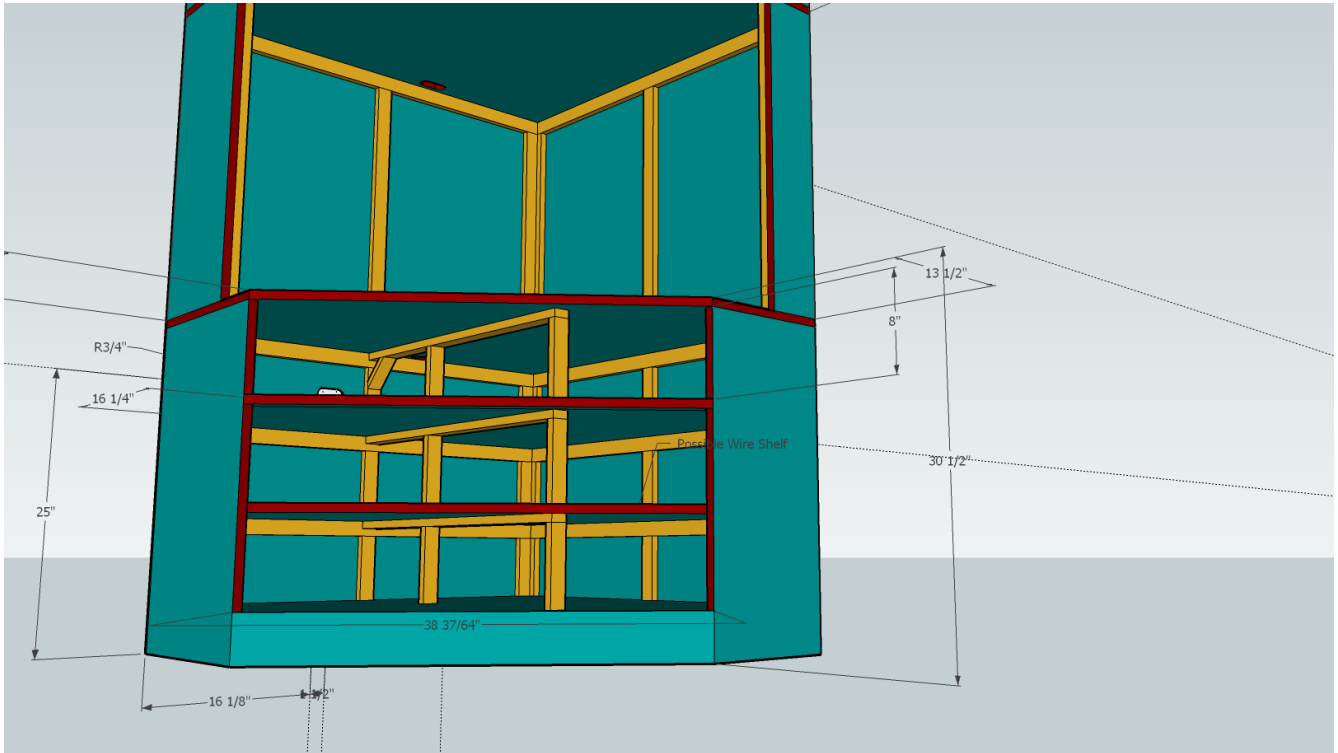
Top:



And a couple of Isometric 3D views:



This one shows the relation of the first and second shelves in the bottom portion (the first shelf is set in a bit to leave space for doors)



This view shows the over-complicated bracing system that I felt the need to design. The shelves are large, and I want the unit to be stable and sag-free, but I couldn't think of a simpler bracing scheme. Inexperience, I suppose.